

# Glendale Union High School District

Maricopa County

Efficiency peer groups 2 and T-5, Achievement peer group 9<sup>1</sup>

Legislative district(s): 20, 24, 28, 29, and 30

District size, location:

Large, City

Students attending:

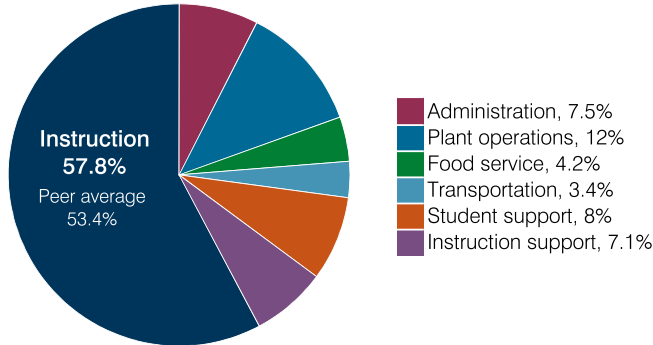
15,387

Number of schools:

10

## OPERATIONAL EFFICIENCY

### Spending by operational area



### Efficiency measures relative to peer averages

Operational area	Measure	District	Peer average	State average
Administration	Cost per pupil	\$637	\$804	\$860
	Students per administrative position	66	67	66
Plant operations	Cost per square foot	\$6.53	\$6.44	\$6.34
	Square footage per student	157	148	156
Food service	Cost per meal	\$3.11	\$3.08	\$3.02
Transportation	Cost per mile	\$6.16	\$3.90	\$4.05
	Cost per rider	\$2,579	\$1,931	\$1,301

Very low   Low   Comparable   High   Very high

### Per pupil spending

Spending by area	District		Peer average 2018	State average 2018
	2017	2018		
Instruction	\$ 4,756	\$ 4,927	\$ 4,135	\$ 4,480
Administration	627	637	804	860
Plant operations	1,017	1,025	941	988
Food service	335	355	342	425
Transportation	280	289	394	388
Student support	680	685	624	693
Instruction support	603	606	492	462
<b>Total operational</b>	<b>8,298</b>	<b>8,524</b>	<b>7,732</b>	<b>8,296</b>
Land and buildings	1,241	843	738	827
Equipment	741	693	531	409
Interest	269	276	238	228
Other	44	49	153	169
<b>Total nonoperational</b>	<b>2,295</b>	<b>1,861</b>	<b>1,660</b>	<b>1,633</b>
<b>Total per pupil spending</b>	<b>\$ 10,593</b>	<b>\$ 10,385</b>	<b>\$ 9,392</b>	<b>\$ 9,929</b>

<sup>1</sup> See Appendix A for information such as districts included in each peer group and Appendix B for sources and methodology.

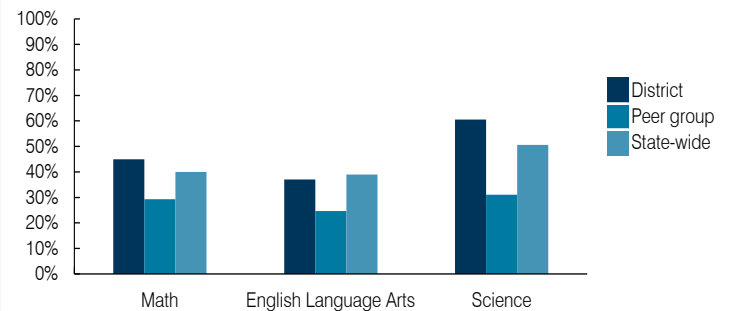
## STUDENT ACHIEVEMENT, STUDENT AND TEACHER MEASURES, AND REVENUES

### ADE-assigned school letter grades

Grade	Number of schools <sup>2</sup>	Percentage of schools
A	7	78%
B	2	22%
C	0	0%
D	0	0%
F	0	0%

<sup>2</sup> Excludes schools for which letter grades were not published by ADE. See Appendix B for more information.

### Students who passed State assessments



### Student and teacher measures

Measure	District	Peer average	State average
Attendance rate	94%	93%	94%
Graduation rate (2017)	90%	88%	78%
Poverty rate (2017)	24%	26%	19%
Special education population	12%	10%	12%
Students per teacher	21.6	21.4	18.4
Average teacher salary	\$62,839	\$58,092	\$48,951
Amount from Prop 301	\$9,198	\$8,795	\$6,411
Average years of teacher experience	12.9	12.0	11.4
Percentage of teachers in first 3 years	9%	18%	19%

### Per pupil revenues

Revenues by source	District		Peer average 2018	State average 2018
	2017	2018		
Federal	\$ 1,224	\$ 1,061	\$ 930	\$ 1,317
State	4,204	4,493	3,760	4,011
Local	4,684	4,920	4,666	4,592
<b>Total per pupil revenues</b>	<b>\$ 10,112</b>	<b>\$ 10,474</b>	<b>\$ 9,356</b>	<b>\$ 9,920</b>

### Select revenues from common sources

Equalization formula funding	\$ 5,502	\$ 5,717	\$ 5,545	\$ 5,585
Grants	1,242	1,167	1,051	1,241
Donations and tax credits	67	60	107	90

### Select revenues from less common sources

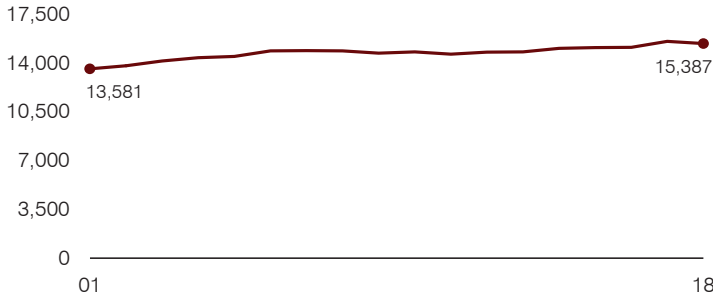
			Number of peers receiving
Desegregation	\$ 394	\$ 399	3 of 10
Small school adjustment	0	0	0 of 10
Federal impact aid	0	0	2 of 10
Voter-approved levy increases	1,802	1,934	10 of 10

**Instructional spending percentage**

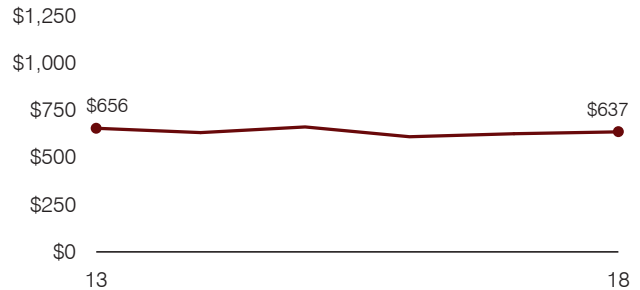
Year: 2001 2002 2003 2004 2005 2006 2007 2008 2009 2010 2011 2012 2013 2014 2015 2016 2017 2018  
 Percentage: 57.3 59.1 59.7 60.1 59.4 59.8 59.5 58.5 58.6 57.4 56.5 56.2 56.3 56.7 55.8 56.1 57.3 57.8

**TRENDS AND FINANCIAL STRESS ASSESSMENT**  
 Fiscal years as indicated

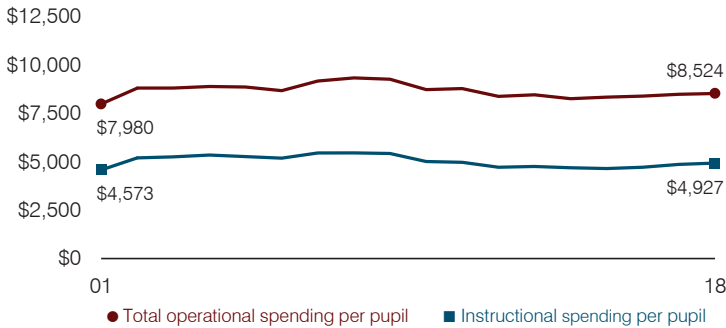
**Students attending**



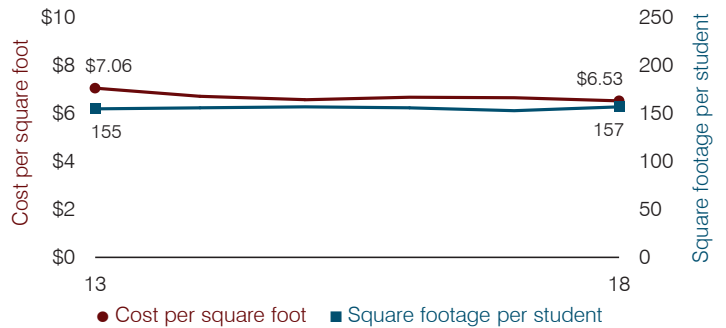
**Administrative cost per pupil**



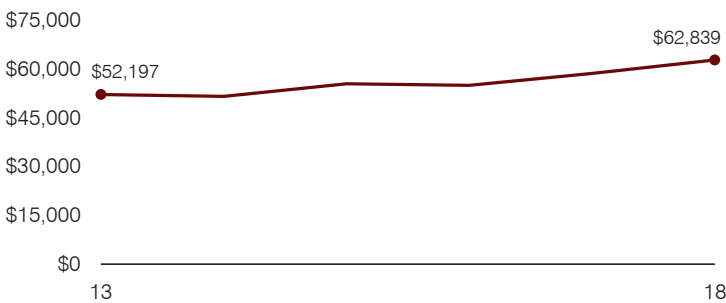
**Total operational and instructional spending per pupil (inflation adjusted to 2018 dollars)**



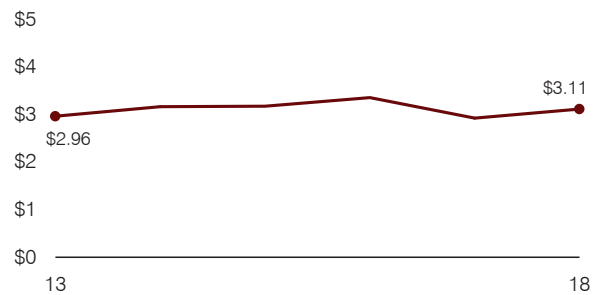
**Plant cost per square foot and square footage per student**



**Average teacher salary**



**Food service cost per meal**



**Financial stress assessment**

Overall financial stress level: **Low**

Measure: 2016 through 2018	Assessment
Change in number of district students	Steady
Spending exceeded operating/capital budgets	Isolated
Spending increase election results	Voter-approved
Operating reserve percentage, Trend	4.2%, Decreasing
Years of capital reserve held	1 to 3 years
Current financial and internal control status	Compliant

Low
Moderate
High

**Transportation costs per mile and per rider**

