



COMMUNITY RESOURCE GUIDE

Glendale Union High School District



Updated May 2022

Table of Contents

■ Phoenix area numbers	Page 2
■ Important services	Page 3
■ Food stamps & family assistance	Page 4
■ Food programs	Page 4-5
■ Sliding scale medical & dental	Page 6
■ Vision & Sports Physicals	Page 7
■ Housing	Page 8
■ Women's Health and Pregnancy	Page 9
■ Low cost counseling	Page 10-11
■ Mental Health/Substance Abuse Assessment & Treatment/teens	Page 12-13
■ Eating Disorders	Page 13
■ Mental Health/Substance Abuse Assessment & Treatment/adults	Page 14-15
■ Substance abuse resources	Page 16
■ Domestic violence programs	Page 17
■ Sexual Assault/Trauma programs	Page 18
■ Parents & teen issues	Page 19
■ Parenting support and prevention	Page 20

**This guide was created by the School Social Workers from the
Glendale Union High School District*



Phoenix Area Phone Numbers:

- POLICE, FIRE OR MEDICAL EMERGENCY 911
- POLICE: PHOENIX NON-EMERGENCY 602.262.6151
- POLICE: GLENDALE NON-EMERGENCY 623.930.3000
- AMERICAN RED CROSS 602.336.6660
- CASA (center for Prevention of Abuse & Violence) 602.254.6400
- **CRISIS INTERVENTION / 24 HOUR MOBILE TEAM 602.222.9444**
- CHILD HELP - PHOENIX 602.271.4500
- CHILD HELP –GLENDALE (W. Valley Advocacy Center) 623.930.3720
- **DEPARTMENT OF CHILD SAFETY 1.888.767.2445**
- EMPACT CRISIS HOTLINE 480.784.1500
- **FIND HELP PHOENIX www.findhelpphx.org**
- GLENDALE FAMILY ADVOCACY CENTER 623-930-3720
- POISON CENTER -AZ 1.800.222.1222
- Psychiatric Recovery Center (24-hour psych. Services for 18+)
11361 N. 99th Ave #402, Peoria 623-583-0232
903 N. 2nd Street, Phoenix www.connectionsaz.com 602-416-7600
- SALVATION ARMY FAMILY SERVICES 602-425-5009
- SILENT WITNESS 480-948-6377
- SUNNYSLOPE FAMILY SERVICE CENTER 602.495.5229

IMPORTANT SERVICES:

- **AHCCCS (SNAP and Medical Services)** 602-417-4000
- **American Heart Association (CPR)** 602-414-5353
- **AZ Child Support Enforcement Agency** 602-252-4045

- **Community Information and Referral** 211
- **Community Legal Services (free)** 602-258-3434
- **Consumer Credit Counseling (moneymgmt.org)** 602-246-2227

- ***Department of Child Safety*** 1-888-767-2445
- **DES – family assistance** 1-888-737-0259

- **Families in Need of Services (Juvenile Court Services)** 602-372-1113

- **Glendale Public Library** 623-930-3600
- **Glendale Dial-A-Ride** 623-930-3500

- **International Rescue Committee** 602-433-2440
- **Juvenile Probation** 602-506-4011

- **Lawyers Referral (\$40 fee)** 602-257-4434
- **Lutheran Social Ministry: Refugee Services** 602-248-4400
- Main office 480-396-3795

- **Mercy Maricopa for AHCCCS (24 hour crisis ONLY)** 602-222-9444
- **Mercy Maricopa for AHCCCS (mental health)** 1-833-227-3100

- **Phoenix Debt Relief Help Center** 602-223-1700
- **Phoenix Public Library** 602-262-4636

- **Social Security Administration www.ssa.gov (16241 N. Tatum)** 1-800-772-1213
- **Superior Court 24 hr. information line** 602-506-7353

- **Unemployment Services: www.des.az.gov** 877-600-2722

- **Valley Metro Bus** 602-253-5000
- **Veterans Affairs** 1-800-698-2411
- **Vital Records (birth and death)** 602-364-1300



Food Stamps & Family Assistance

DES Main Number– 855-777-8590
Arizona Statewide Interview Line

- SERVICES AVAILABLE THROUGH DES / FAA OFFICES
- ELIGIBILITY BASED ON HOUSEHOLD INCOME AND RESOURCES
- VISIT THE OFFICE CORRESPONDING TO YOUR ZIP CODE; FILL OUT AN APPLICATION AND MAKE AN APPOINTMENT FOR AN INTERVIEW, OR YOU CAN APPLY ONLINE:

APPLY ON-LINE – www.healthEArizonaplus.gov

1-855-432-7587 (1-855-HEA-PLUS)

DES CHILD CARE:

- Administration Office 602.542.4248
- PHOENIX 602.569.4719
- Find a Child Care Provider www.azchildcare.org 1-800-308-9000

HEAD START:

- PHOENIX 602.262.4040
- WESTSIDE HEAD START 623.486.9868
- SOUTHWEST HUMAN DEVELOPMENT (early Head Start) 602.266.5976

Food Programs

- Arizona Food Bank Network www.foodbanks.org
- EMERGENCY FOOD ASSISTANCE PROGRAM:
<https://des.az.gov/services/basic-needs/food-assistance/emergency-food-assistance>

Food Programs, Con't.

- COMMUNITY CENTER – COYOTE RIDGE SYSTEM OF CARE CENTER
 7677 W. Bethany Home Rd.
 2nd & 4th Wed. Drive Thru 9:00am

- Health-e-Arizona Plus for Nutrition Assistance 855-432-7587
www.healthEArizonaplus.gov

- No Kid Hungry - list of schools with free food text **FOOD** or **COMIDA** to 304-304
www.nokidhungry.org/help

- DESERT MISSION FOOD BANK 602.870.6062
 9229 N. 4th Street, Phoenix
 Monday -Friday 9:00 – 3pm

- HARVEST COMPASSION CENTER (food and clothes bank) 602-788-2444
 4744 E. Thunderbird Rd. #7
 Mondays/Wednesdays/Saturdays: 9:00 - 11:30am

- MARKET ON THE MOVE 623-399-3523
 Go to www.the3000club.org to find weekly drop-off locations

- MOM'S PANTRY 602.992.0083
 13440 N. Cave Creek Rd.
 Saturdays 10-2, Sundays 10-1

- OPEN DOOR FELLOWSHIP 602.242.4414
 8301 N. 19th Avenue, Phoenix
 2nd and 4th Saturday 8:30 - 11:00am

- Produce on Wheels – Without Waste (POWWOW)
 Go to: <http://www.borderlandsproducerescue.org/produce-on-wheels/> to find weekly drop-off locations

- PURE HEART CHURCH 602.866.8850
 14240 N. 43rd Ave
 Tuesday/Fridays 10:00 - 12:00pm / Thursdays 5:00 - 7:00pm

- ST. MARY'S FOOD BANK 602.352.3640
 2831 N 31st Avenue, Phoenix firstfoodbank.org
or 602-242-3663 (FOOD)

- ST. VINCENT DE PAUL - Pantry 602.433-7613
 (located inside St. Simon and Jude Church 6351 N 27th Ave, Phoenix)

- ST. VINCENT DE PAUL – Sunnyslope dining room 602. 339-7611
 9227 N. 10th Ave. Phoenix

- VINEYARD CHURCH (food and clothing bank) 623.934.4000
 6250 W. Peoria Avenue, Phoenix
 M, T, TH: 7pm-8:30pm; WED, FRI, SAT, SUN 9:00am

Medical & Dental Resources Sliding Scale



MEDICAL:

- BANNER SCHOOL-BASED HEALTH CLINIC 480.412.6344
- CIRCLE THE CITY (healthcare for the homeless) 602-776-7676
Located at Parson's Family Center (3522 N. 3rd Ave)
- NOAH - DESERT MISSION HEALTH CENTER 602.870.6363
- MARICOPA COUNTY MEDICAL CENTER 602.344.5011/ 602.344.5407
- MARICOPA COUNTY PUBLIC HEALTH DEPT. 602.506.1678
- MISSION OF MERCY – **Mobile Medical Services** Phx/Mesa 602.486.7798
Avondale 623-932-2723
- MOUNTAIN PARK HEALTH CENTER (E. Phx/Maryvale) 602.323.8200 / 623.247 6266
- NATIVE HEALTH COMMUNITY CENTER 602.279.5351
- NEIGHBORHOOD CHRISTIAN CLINIC 602.258.6008
- STD TESTING SITES: <https://www.testing.com/std-testing/phoenix-az/>
- ST. VINCENT DE PAUL CLINIC 602.261.6868
- VALLE DEL SOL 602.258.6797
- VALLEY WISE HEALTH MEDICAL CENTER 602.344.5011

DENTAL:

- GLENDALE FAMILY HEALTH CENTER 623.344.6700
- IG Homes/Boys and Girls Club Dental Clinic 602.271.9961
- NOAH - DESERT MISSION DENTAL CLINIC 480.882.4545
- NATIVE HEALTH COMMUNITY CENTER 602.279.5351
- NEIGHBORHOOD CHRISTIAN CLINIC 602.258.6008
- PHX COLLEGE DENTAL (Cleaning & X-rays) 602.285.7323
- ST. VINCENT DE PAUL CLINIC 602.261.6868
- VALLEY WISE HEALTH MEDICAL CENTER 602.344.5011

Vision Services



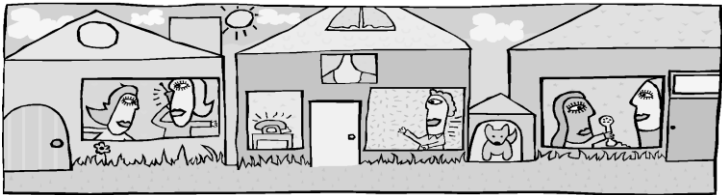
- FOUNDATION FOR BLIND CHILDREN (Low vision services) 602.337.8257
- LIONS VISION CENTER (exam/glasses) 602.267.7573
- SIGHT FOR STUDENTS (www.sightforstudents.org) 888.290.4964
- WALMART VISION CARE PROGRAM (free exam/glasses) 602.249.7272

Sports Physicals



- OPTUM PRIMARY CARE 602.336.1966
- 1ST FAMILY MEDICAL GROUP 602.544.2273
- FAST MED (Multiple sites) 602-283-0595
- TAKE CARE CLINICS – WALGREENS
- MINUTE CLINICS – CVS PHARMACY
- THE LITTLE CLINIC – FRY’S MARKETPLACE

Housing



HOMELESS SERVICES

- **SHELTER HOTLINE (CONTACTS)** **1.800.799.7739** or **211**
- CENTRAL ARIZONA SHELTER SERVICES 602.256.6945
- FAMILY PROMISE 480-659-5227
(emergency shelter, transitional housing, employment, case management)
- HOMEBASE YOUTH SERVICES (18+) 602-263-5531
- HOMELESS YOUTH CONNECTION 623.374.3747
- HALLE WOMEN'S CENTER 602-362-5833
- NATIVE AMERICAN CONNECTIONS 602.254.3247
www.nativeconnections.org/housing
- A NEW LEAF SHELTER (single women 18+) 602.595.8700
- PHOENIX RESCUE MISSION 602.688.6219
- SAFE PLACE – 24 hour resource hotline for 12-17 year old) 602- 841-5799
- TXT4HELP Text "SAFE" & current location to: 4HELP (44357)
- UMOM New Day Center 602.275.7852
- UMOM Family Housing Hub 602.595.8700

RENTAL ASSISTANCE

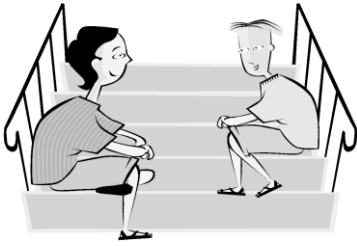
- GLENDALE CAP OFFICE (Glendale/59th) 623.930.2854
- OUR LADY OF PERPETUAL HELP 623.939.3732
- SALVATION ARMY 602.267.4127
- ST. SIMON & JUDE 602.433.7613
- ST. VINCENT DE PAUL 602.261.6883
- SUNNYSLOPE FAMILY SERVICE CENTER (9th Ave and Hatcher) 602.534.2433

TRANSITIONAL AND LOW-INCOME HOUSING

- CHICANOS POR LA CAUSA (rent assistance) 602.253.0838
- CITY OF PHOENIX HOUSING (section 8 / transitional housing) 602.262.6794
- COMMUNITY HOUSING PARTNERSHIP (rent assistance) 602.253.6905
- COMMUNITY LEGAL SERVICES 602.258.3434
- GLENDALE COMMUNITY HOUSING 623.930.2180
- HABITAT FOR HUMANITY 602.268.9022
- HOMEBASE EMERGENCY HOUSING (Youth 18-24) 602-263-5531
- HOMEWARD BOUND (affordable housing) 602.263.7654
- HOUSE OF REFUGE/HOPE (transitional housing) 602.678.0223
- HOUSING AUTHORITY OF MARICOPA COUNTY (section 8) 602. 253-5407
- HUD (housing and urban development) 602.379-4461
- LABORS COMMUNITY SERVICE (affordable housing) 602. 263-5741
- ONE.N.TEN –housing for young adults 602.400-2601
www.onenten.org/programs
- PHX. REVITALIZATION CORP. 602.253.6895

Women's Health & Pregnancy

- Arizona Wellness Center for Women (Family planning, pregnancy, delivery and postpartum care) 602-992-3162
- Arizona Youth Partnership (pregnancy health and wellness, pregnancy and childbirth education) 480-571-3497
- Catholic Charities Community Services (24/7 hotline) 1-888-818-4445
- Child and Family Resources (Home Visitation Program) 602-234-3941
- Child Care Resource and Referral – Arizona 1-800-308-9000
- Choices Pregnancy Center (www.choicesaz.com for scheduling appt) 623-486-5232
- Christian Family Care Agency (training and pregnancy counseling) 602.234.1935
- Desert Mission Food Bank – Infant Emergency food box program (food each month that meet their baby's needs from newborn to 12 months old) 602-870-6062
- 1st Way Pregnancy & Support Center (Closed Sun and Mon. Offers testing, material support) 602.261.7522
- Maggie's Place (Shelter for pregnant mothers, parenting/life skills classes, hearing, vision, child development screenings for children 0-5, Infant and Child safety classes) 602-246-3724
- Maricopa Center – Hope Women's Center: (pregnancy testing and support) 623-875-4549
- Maricopa County – Healthy Start www.maricopa.gov/4973/Healthy-Start (free pre-pregnancy/pregnancy education, family planning services)
- Native Health Prenatal Services : 602-279-5262 ext. 3441
- New Life Pregnancy Center (Free testing, material assistance, parenting classes and community resources) 602-346-2300
- NOAH -Desert Mission Health Center - Prenatal Services 480-882-4545
- Phoenix Women's Clinic (free pregnancy tests, family planning sessions) 602-305-5100
- Planned Parenthood – Glendale Health Center: 602-277-7526
- Southwest Human Development / Nurse Family Partnership: (Online application referral form: www.swhd.org/NFP) 602-506-0610
- Valley Wise Community Health Center -Sunnyslope (Family medicine and OBGYN) 602-344-6550
- Women, Infants and Children (WIC) (Online appointment scheduling www.maricopa.gov/1491/Women-Infants-Children-WIC) 602-506-9333



Low Cost Counseling

CRISIS INTERVENTION / 24-HOUR MOBILE TEAM 602.222.9444

- A NEW LEAF WEST VALLEY FAMILY CARE 623.934.1991
(AHCCCS and sliding scale for patients with no insurance)
- BANNER THUNDERBIRD (no AHCCCS) 800.254.4357
- BAYLESS INTEGRATED HEALTHCARE – (AHCCCS/no insurance) 602-230-7373
(mental health/sub abuse counseling for adults/youth)
- BILLY’S PLACE www.billysplace.me/ 623.414.9838
Grief support; FREE services that supports adults and children
- BLACK FAMILY & CHILDREN’S SERVICES – no sliding scale 602.243.1773
- CATHOLIC CHARITIES COMMUNITY SERVICES Main 602.997.6105
(Accepts major insurances / AHCCCS plans; sliding fee scale) Counseling 602.749.4405
- CHICANOS POR LA CAUSA Intake 480-535-3147
All insurances accepted; self-pay – set fees (intake and therapy \$60/session)
- DOORWAYS (no AHCCCS) 602.997.2880
If no insurance, self-pay based on needs and circumstance- first appointment is \$175
- FAMILY SERVICE AGENCY Multi-sites 602.264.9891
(AHCCCS plans, no private insurance sliding scale for patients with no insurance)
- FIRST EPISODE CENTER 623.344.6860
- HOSPICE OF THE VALLEY – New Song Center (youth) 480.951.8985
- Adult Bereavement 602.530.6970
Grief support; FREE service that supports adults and children, supports undocumented clients

Low Cost Counseling, Con't.

- INTEGRATED BEHAVIORAL HEALTH CARE – Valley Wise 1.833.8553.9973
Accepts AHCCCS and most major insurances
- JEWISH FAMILY & CHILDREN'S SERVICES 602.256.0528
Accepts AHCCCS, sliding scale for patients with no insurance (includes undocumented patients)
- LA FRONTERA EMPACT 480.784.1514
Accepts AHCCCS, sliding scale for patients with no insurance (includes undocumented patients)
- MENTALLY ILL KIDS IN DISTRESS (MI KID) (AHCCCS) 602.253.1240
- NATIVE HEALTH (non-native clients okay, open to all) 602.279.5262 x 3204
Accepts AHCCCS, sliding scale for patients with no insurance (includes undocumented patients)
- NAU FREE COUNSELING SERVICES 602-776-4636
(only available when college students enrolled)
- NOAH BEHAVIORAL HEALTH 480-882-4545
Accepts AHCCCS, sliding scale for patients with no insurance (includes undocumented patients)
- PSYCHOLOGICAL PATHWAYS 844.385.3747
Accepts AHCCCS, sliding scale for patients with no insurance (includes undocumented patients)
- RESILIENT HEALTH 877.779.2470
- SOUTHWEST BEHAVIORAL HEALTH Metro Phoenix 602.997.2233
Accepts AHCCCS, sliding scale for patients with no insurance (includes undocumented patients)
- TERROS 602.685.6000
Accepts AHCCCS, sliding scale for patients with no insurance (includes undocumented patients)
- TOUCHSTONE BEHAVIORAL HEALTH 866.207.3882
(AHCCCS only accepted)
- VALLE DEL SOL 602.258.6797
Counseling appointments set up via walk in only. Find closest location at valledelsol.com/locations
Mondays starting 8am at all locations except South Phoenix; arrive early

Mental Health & Substance Abuse Assessment & Treatment - Adolescents

- | | |
|--|--------------|
| <ul style="list-style-type: none"> ▪ Adolescent Substance Abuse Program (IOP counseling)
www.Asapaz.com 8607 N. 59th Ave, Glendale | 602-434-0249 |
|--|--------------|

- | | |
|---|--------------|
| <ul style="list-style-type: none"> ■ Anasazi Foundation
www.anasazi.org (Residential wilderness program for ages 13-17) | 480-892-7403 |
|---|--------------|

- | | |
|--|--------------|
| <ul style="list-style-type: none"> ▪ Arizona Child Psychology,
www.arizonachildpsychology.com | 602-824-8804 |
|--|--------------|

- | | |
|--|--------------|
| <ul style="list-style-type: none"> ▪ A New Leaf West Valley Family Care Clinic (IOP counseling)
www.turnanewleaf.org 8581 N. 61st Ave, Glendale | 480-733-3050 |
|--|--------------|

- | | |
|--|--------------|
| <ul style="list-style-type: none"> ▪ Aurora Behavioral Health (Residential and IOP counseling)
www.Auroraarizona.com [various locations] | 623-344-4400 |
|--|--------------|

- | | | | | | |
|--|--|------------|--------------|---------|--------------|
| <ul style="list-style-type: none"> ▪ Banner Behavioral Health Hospital
www.bannerhealth.com | <table border="0" style="width: 100%; border-collapse: collapse;"> <tr> <td style="width: 30%;">Scottsdale</td> <td style="width: 70%;">480-448-7500</td> </tr> <tr> <td>Phoenix</td> <td>602-865-5555</td> </tr> </table> | Scottsdale | 480-448-7500 | Phoenix | 602-865-5555 |
| Scottsdale | 480-448-7500 | | | | |
| Phoenix | 602-865-5555 | | | | |

- | | |
|--|--------------|
| <ul style="list-style-type: none"> ▪ Community Bridges – Center for Excellence
www.communitybridgesaz.org (various locations) | 602-861-2255 |
|--|--------------|

- | | |
|---|--------------|
| <ul style="list-style-type: none"> ▪ Core recovery (IOP counseling)
https://corerecoveryaz.com/ 34225 N. 27th Dr. Phoenix | 602-810-1210 |
|---|--------------|

- | | |
|--|--------------|
| <ul style="list-style-type: none"> ● Devereux Advanced Behavioral Health (RTC and outpatient)
http://www.devereux.org [various locations] | 602-944-6222 |
|--|--------------|

- | | |
|--|--------------|
| <ul style="list-style-type: none"> ● Doorways (IOP for youth 13-17)
www.doorwaysarizona.com 4747 N. 7th St. Suite 450, Phoenix | 602-997-2880 |
|--|--------------|

- | | |
|---|--------------|
| <ul style="list-style-type: none"> ● Jewish Family and Children’s Services
https://www.jfcsaz.org/ [various locations] | 602-279-7655 |
|---|--------------|

- | | |
|--|--------------|
| <ul style="list-style-type: none"> ● La Frontera Empact-SPC
http://lafrontera-empact.org/ 4425 W. Olive, Suite 194 Glendale | 480-784-1514 |
|--|--------------|

Mental Health & Substance Abuse Assessment & Treatment – Adolescents Con't.

- **Mind 24/7** – Urgent psychiatric care for children/adults 24/7 1-844-646-3247
 2728 N. 24th St. Phoenix, Arizona 85008
- Native American Connections – Tree Program 602.424.2060
 (behavioral health and substance abuse for 14-26 year old youth)
- Oasis Behavioral Health (mental health/chem dependency, Chandler) 480-470-0069
<https://www.obhhospital.com/> 2190 N Grace Blvd, Chandler
- Open Hearts Family Wellness (IOP for adolescents and adults) 602-285-5550
www.openheartsaz.org 4414 N 19th Ave, Phoenix
- Pathway Drug Abuse Program (IOP and residential treatment) 877-921-4050
www.thepathwayprogram.com 4820 S Mill Ave Suite 101, Tempe
- Quail Run 24 hour assessment 602-455-5694
<https://quailrunbehavioral.com> 2545 W Quail Ave, Phoenix general info 602-455-5700
- Southwest Behavioral Health (inpatient and IOP treatment) 602-265-8338
www.sbhservices.org [see website for various locations]
- St. Luke's Behavioral Health (adolescent in-patient) 24 hour assessment 602.251.8535
<https://www.stlukesbehavioralhealth.org/> 1800 E. Van Buren St. Phoenix

Treatment for Eating disorders

- Community Connections <http://www.communityconnectionsaz.org/> 623-242-8460
- Doorways (outpatient) www.doorwaysarizona.com 602-997-2880
- Healthy Futures (IOP) www.healthyfuturesaz.com 480-451-8500
- The Mandel Center www.mandelcenter.com 480.734.1199
- Meadows Ranch www.meadowsranch.com 866-390-5100
- Rachael Rubenstein Counseling www.rrcounseling.com 480.994.9773
- Rosewood Ranch (Tempe, Wickenburg) 844-921-4505
- Support: NEDA Feeding Hope www.nationaleatingdisorders.org
 Free and Low-Cost support community (not treatment)

Mental Health & Substance Abuse Assessment & Treatment – Adults

- Aurora Behavioral Health
www.Auroraarizona.com
623-344-4400

- Banner Behavioral Health Hospital
www.bannerhealth.com
Scottsdale 480-448-7500
Phoenix 602-865-5555

- Calvary Healing Center
www.calvarycenter.com
602-279-1468

- Casa de Amigas – (residential substance abuse for women)
www.casadeamigas.org
602-265-9987

- Community Bridges
www.communitybridgesaz.org
877-931-9142

- Copper Springs Behavioral Health Hospital (Avondale)
<https://coppersprings.com/> (inpatient and IOP for mental health and addiction)
480-565-3035

- **Connections AZ** – Urgent Psychiatric Care for adults 24/7
1201 S. 7th Street #150 Phoenix 85007
602-416-7600

- Ebony House – (residential substance abuse for men)
<http://ebonyhouseinc.org/>
602-276-4288

- Elba House – (residential substance abuse for women w/ children)
http://ebonyhouseinc.org/programs_elba.asp
602-243-5492

- Family Service Agency
www.FSAphoenix.org
602-264-9891

- **Mind 24/7** – Urgent psychiatric care for adults 24/7
1138 S. Higley Mesa, AZ 85206
1-844-646-3247

- Native American Connections
www.nativeconnections.org – (IOP for adults)
602-424-2060

- Native American Connections: Patina Wellness Center
www.nativeconnections.org (residential substance abuse for men/women)
602-254-5805

- Oasis Behavioral Health (Chandler)
866-593-3608

- Open Hearts Family Wellness (IOP for adolescents and adults)
www.openheartsaz.org
602-285-5550

Mental Health & Substance Abuse Assessment & Treatment – Adults Con't.

- | | | |
|---|------------------------------------|------------------------------|
| <ul style="list-style-type: none"> ▪ Quail Run Residential
https://quailrunbehavioral.com | 24 hour assessment
general info | 602-455-5694
602-455-5700 |
|---|------------------------------------|------------------------------|

- | | |
|---|--------------|
| <ul style="list-style-type: none"> ▪ Reborn Assistance Association – (transitions living house for men)
www.rebornassistance.org | 602-433-2382 |
|---|--------------|

- | | |
|--|--------------|
| <ul style="list-style-type: none"> ▪ Sand Dollar Discovery House – (transitions living house for women) | 623-247-7877 |
|--|--------------|

- | | |
|---|--------------|
| <ul style="list-style-type: none"> ▪ 2nd Chance Treatment Center
www.2ndchancetreatment.com (counseling and IOP for mental health/addiction) | 623-231-5535 |
|---|--------------|

- | | |
|--|--------------|
| <ul style="list-style-type: none"> ▪ Southwest Behavioral Health (inpatient and IOP treatment)
www.sbhservices.org [see website for various locations] | 602-265-8338 |
|--|--------------|

- | | |
|---|--------------|
| <ul style="list-style-type: none"> ▪ St. Luke's Behavioral Health
www.stlukesmedcenter.com | 602-251-8535 |
|---|--------------|

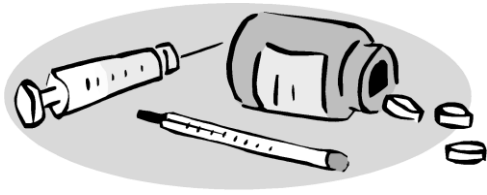
- | | |
|--|--------------|
| <ul style="list-style-type: none"> ▪ Sunlight of the Spirit – (transitions living house for women)
www.sunlightofthespiritrecovery.org | 602-864-5032 |
|--|--------------|

- | | |
|---|--------------|
| <ul style="list-style-type: none"> ▪ TERROS
www.terros.org | 602-685-6000 |
|---|--------------|

- | | |
|---|-----------------------------|
| <ul style="list-style-type: none"> ▪ Valley Hope Alcohol and Drug Center (Tempe/Chandler)
https://valleyhope.org/ (residential & IOP treatment for substance abuse and recovery) | 480.599.3335 / 800.544.5101 |
|---|-----------------------------|

- | | |
|---|--------------|
| <ul style="list-style-type: none"> ▪ Valley Hospital (AHCCCS accepted for inpatient)
https://valleyhospital-phoenix.com/ (inpatient and IOP for mental health and substance abuse) | 602-952-3939 |
|---|--------------|





Substance Abuse Resources

12-STEP SUPPORT GROUPS

- | | |
|--|---|
| <ul style="list-style-type: none"> ▪ Alcoholics Anonymous
www.aaphoenix.org ▪ Cocaine Anonymous
www.ca.org ▪ Marijuana Anonymous
www.marijuana-anonymous.org ▪ Narcotics Anonymous
www.arizona-na.org ▪ Adult Children of Alcoholics
www.adultchildren.org ▪ Al-Anon & Alateen
srvais.org | <p>Phoenix 602-264-1341</p> <p>602-279-3838</p> <p>1.800.766.6779</p> <p>480-897-4636
818-773-9999</p> <p>602-241-6760</p> <p>602-249-1257</p> |
|--|---|

ONLINE RESOURCES

- Drug Free AZ Kids www.drugfreeazkids.org
- Join Together www.drugfree.org
- National Institute on Drug Abuse www.drugabuse.gov
- Not My Kid 602-652-0163 www.notmykid.org
- Substance Abuse & Mental Health Services Admin www.samhsa.gov
- The Anti-Drug www.theanti-drug.com
- Think Twice www.justthinktwice.gov
- Vaping resources for parents and teens <https://teen.smokefree.gov>
800-QUIT-NOW (800-784-8669)

SUBSTANCE ABUSE TESTING

- Any Lab Test Now 602-955-0240
- Concentra 602-375-1155
12808 N Black Canyon Highway Phoenix

DETOXIFICATION

- Central City Addiction Recovery Center (CCARC) 602-273-9999
www.communitybridgesaz.org
- East Valley Addiction Recover Center (EVARC) 480-962-7711
www.communitybridgesaz.org
- St. Luke's Behavioral Health Center Substance Abuse 602-251-8535
www.stlukesmedcenter.com
- Aurora Behavioral Health 480-345-5420

Domestic Violence Programs

- **NATIONAL DOMESTIC VIOLENCE HOTLINE** **1.800.799.7233**
- **AZ Safe DV Services- HOTLINE** **480.890.3039**
- AZ COALITION AGAINST SEXUAL & DOMESTIC VIOLENCE 602.279.2900
- ARIZONA COMMUNITY FOUNDATION 602-532-2800
- FAMILY ADVOCACY CENTER (Phoenix) 602.534.2120
- FAMILY ADVOCACY CENTER (Glendale) 623-930-3720

DV SHELTERS

** Call AZ Safe DV Services HOTLINE 480.890.3039 for bed availability first **

- A NEW LEAF - AUTUMN HOUSE (Mesa) 480.835.5555
- A NEW LEAF - FAITH HOUSE (Glendale) 623.939.6798
- CHRYSALIS (Phoenix) 602.944.4999 / 602-955-9059
- CPLC - DE COLORES (Phoenix) 602.269.1515
- EVE'S PLACE (Surprise) – mobile advocacy 623.537.5380
- MY SISTER'S PLACE – CATHOLIC CHARITIES (Chandler) 480.821.1024
- NEW LIFE SHELTER (Goodyear) 623.932.4404
- SOJOURNER (Phoenix) 602.244.0997
- VISTA COLINA 602.870.8778

Sexual Assault/Trauma Programs

- National Human Trafficking Hotline 888-373-7888
- RAINN (Rape, Abuse & Incest National Network) Hotline: 800-656-4673
- The REACH Center/ Helpline 480-733-3028
Providing emotional support, personal advocacy, resource referral, holistic healing classes (Trauma informed yoga, sound healing)
- La Frontera EMPACT- Trauma Healing Services
To apply: call **480-784-1514**, ask for trauma healing services.
Eligibility: No cost services for survivors of trauma (AHCCCS is required). Includes 1:1 services or groups. Some services, available in Spanish
- RISE (Resilience In Shared Experience) Support Groups
Link to sign up for link for the sexual violence survivor support group: bitly.com/rise-group
- Glendale Family Advocacy Center (FAC) 623-930-3720
6830 N. 57th Dr. Glendale, AZ 85301
Victim Assistance: (623) 930-3030
pdva@glendaleaz.com
- Catholic Charities Community Services For Counseling: 602-749-4405
Victim Advocacy
Individual Counseling free for survivors of sexual violence.



Parent & Teen Issues

Teen Help Lines

- Teen Lifeline 602.248.TEEN
- La Frontera/EMPACT Suicide Prevention Hotline - 24 hour 480-784-1500
- UMOM- Runaway (Ages 12-17) Hotline - 24 hour 602-841-5799
- Homebase Youth Services – runaway/homeless youth (18-25) 602-254-3247
- NATIONAL SUICIDE PREVENTION LIFELINE 800-273-8255

Gay, Lesbian, Bi-sexual, Transgender, Questioning

- Q-LINE (CRISIS) 480-736-4925
- Trevor CRISIS LIFELINE TREVORSPACE.ORG, TREVORCHAT.ORG 866-488-7386
text "START" to 678678 (24 hours)
- ONE.N.TEN – support groups/housing www.onenten.org/programs
- Q Counseling and Gender Center, Dr. Peck 602-570-2373
- Bloom365 (support groups) 1-888-606-4673 (call or text)

Mentor and Youth Programs

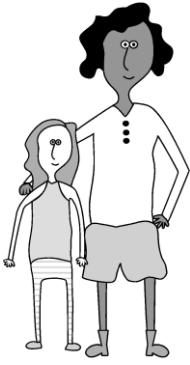
- Arizona Friends of Foster System – Keys to Success Program 602-252-9445
<https://www.affcf.org/keys/>
- Bloom365 text "BLOOM365PS" to 81010 for group info
www.bloom365.org
- New Pathway for Youth (Mentoring Program ages 12-21) 602-258-1012

Immigration services

- Arizona Dream Act Coalition (ADAC) 602.842.3748
- Catholic Charities / FAMILIAS UNIDAS 602.997.6105/602-749-4415
- Citizenship and Immigration Services 800.375.5283
- Friendly House (citizenship/green card) 602.257.1870
- IRC 602.433.2440
- Lutheran Social Services 602.248.4400
- Scholarships A-Z www.scholarshipsaz.org

Miscellaneous

- Juvenile Probation 602-506-4011
- Glendale Community Center 623-930-4700
- Glendale Graffiti Hotline 623-930-3080
- Phoenix Graffiti Hotline 602-262-7327



Parenting Support & Prevention

- American Association of Single Parents
www.Aasp-inc.org
- Arizona Children Association – parenting education 800.944-7600
www.arizonaschildren.org/parenting-education
- Arizona Children Association - grandparent support 800-944-7611
www.AzKN.org
- Family Involvement Center 602-288-0155
www.familyinvolvementcenter.org
- Fresh Start Women’s Center 602-252-8494
www.freshstartwomen.org (offender counseling, DV and sexual assault counseling)
- Families in Need of Services (FINS) 602-372-1113
<https://superiorcourt.maricopa.gov/juvenile-probation/fins/>
- Not My Kid 602-652-0163
www.notmykid.org
- Parenting Arizona/Chicanos por la Causa 480-491-2301
www.cplc.org/hhs/parenting.php
- Sage Counseling (services for court mandated counseling) 480-649-3352
www.sagecounseling.net (offender counseling, DV and sexual assault counseling)
- Wesley Community and Health Center - grandparent support 602-233-0017
www.wesleycenterphx.org/golden-gate-community-wesley-health-center

