

Installing Respondus LockDown Browser on Mac

Please follow these directions on downloading the software program Respondus LDB onto your computer.

Navigate in Web Browser to Respondus Website

1. Open a web browser and type in this URL (or click on link)
<http://www.respondus.com/lockdown/download.php?id=268947310>.
2. Click on ***Do you need the Mac Version?***
3. Click the **Install Now** and the website will automatically check your operating system and download the right version for your computer.
4. By default, LDB program is set to Open with Archive Utility (default) and it is strongly suggested not to change this setting to ensure a proper download/install of program.

Respondus[®]
Assessment Tools for Learning Systems

Step: 1 of 2

LockDown Browser

Version: 2.0.1.07
Your system: Windows (set by you)

System requirements

Do you need the Mac version?
Are you a computer lab manager?

Before You Install:

This brief video explains the basic features of LockDown Browser and why it's used at your institution.

Terms & Conditions:

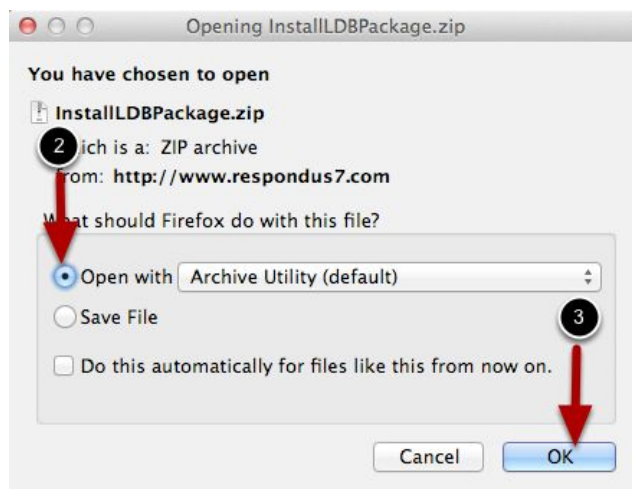
By clicking the "Install Now" button, you acknowledge that you have read and agree to the [Respondus Inc. License Agreement](#)

Note: Your antivirus software must allow you to install software.

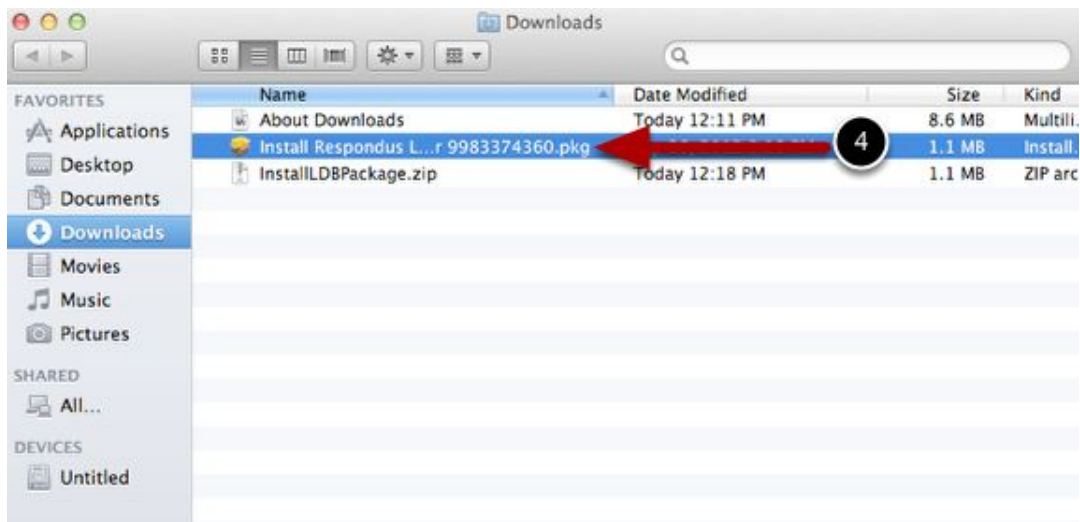
Install Now

Total size: 57.0 MB

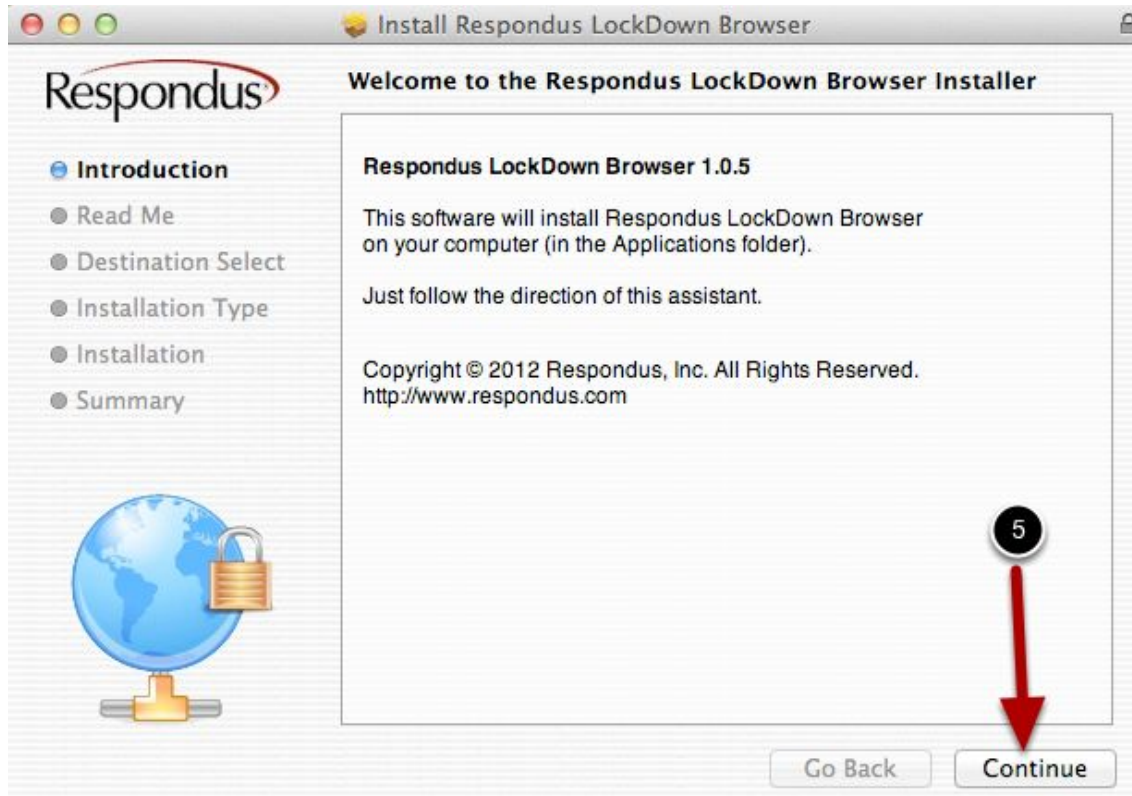
5. Click the **OK** button.



6. Click on the **Install Respondus LockDown Browser.....pkg** file/link to open/launch the program.

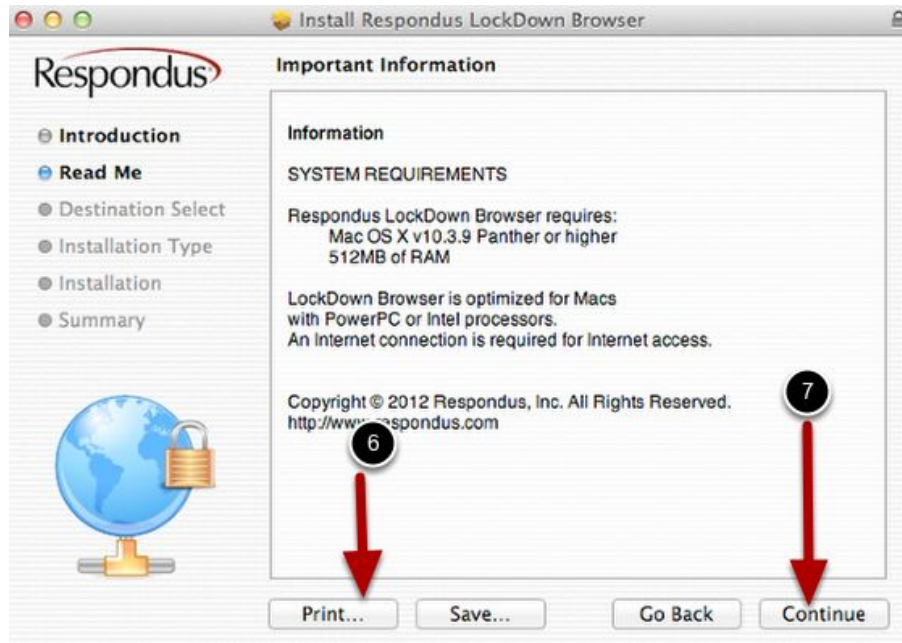


7. Click on the **Continue** button.



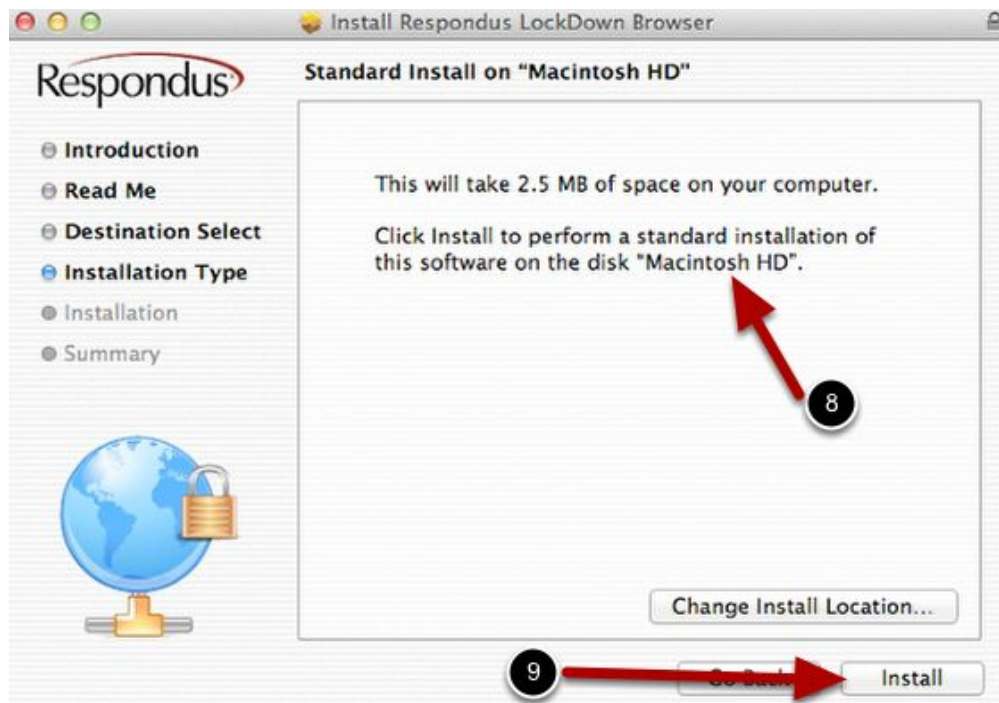
8. Choose the optional **Print** or **Save** button about the system requirements for the program to run.

9. Click on the **Continue** button.



10. By default, the program is downloaded onto the Macintosh HD and it is strongly suggested not to change the Install Location.

11. Click on the **Install** button



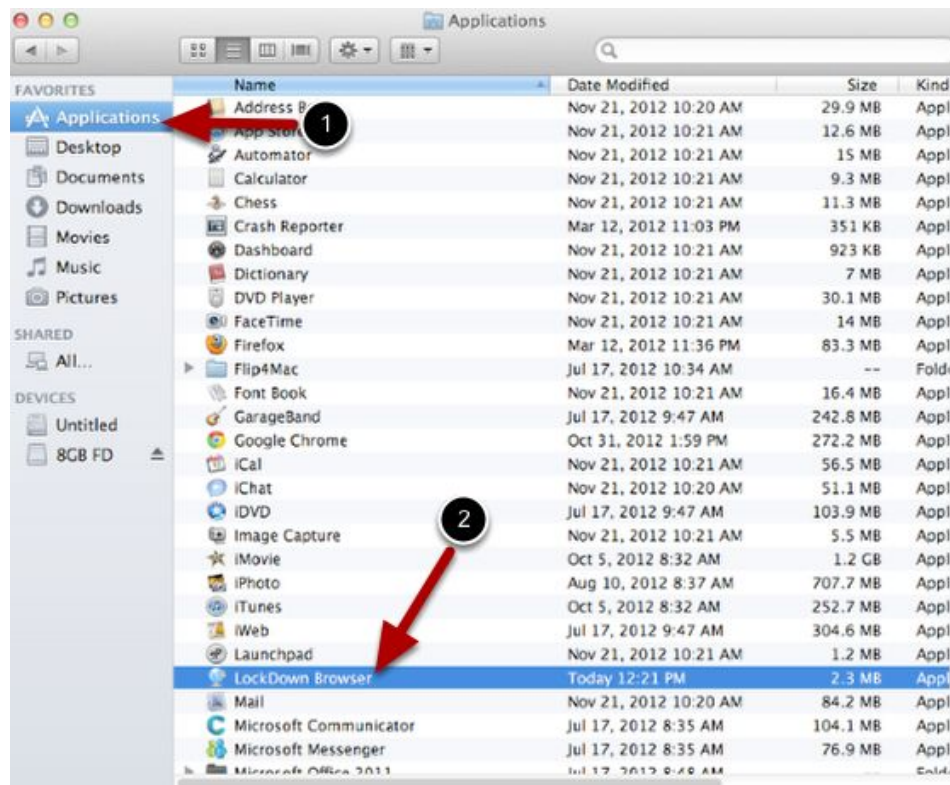
12. When Respondus LDB has been successfully installed onto the computer, a message will appear.

13. Click the **Close** button.



Locate LDB program

1. LDB program will be downloaded into the Applications area.
2. Scroll to located and click on LockDown Browser application to open/launch the program. On a MAC, Respondus LDB simulates Safari browser when it launches. Please launch Safari and log into the Canvas.



Create Desktop Icon

1. To create a desktop icon (shortcut), click and drag the LockDown Browser symbol onto the desktop screen.

2. Drop the LockDown Browser symbol onto the desktop and a new desktop icon should appear.

